

Instruction Sheet for 1018 Short Snoot Surface Mount / Junction Mounting Plate Installation



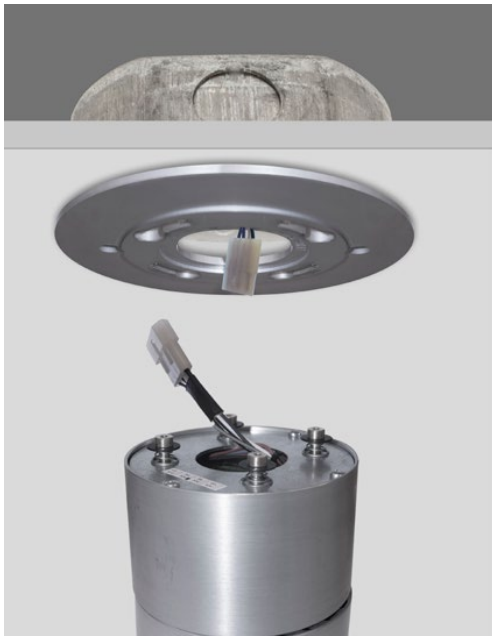
Step 1- Ceiling box above ceiling.
Cut-out opening in drywall.



Step 2- Attach junction mounting
plate to ceiling box with #8-32
counter sink screws
(Screws supplied by SLI)



Step 3- Connect wiring before
mounting fixture to mounting plate



Step 4- Align (4) housing pins on fixture
to mounting plate (4) keyway slots.
Push housing into mounting plate
while twisting clockwise.
(See step 5 for linking mechanism)



Step 5- Top view closeup of
gold pins and keyway slots. Make
sure housing pins have locked into
keyway slots.



Step 6- Finish installation