

Installation Instructions

Rivet 3" Sq. Double - Flangeless Plaster Trim - Universal Housing

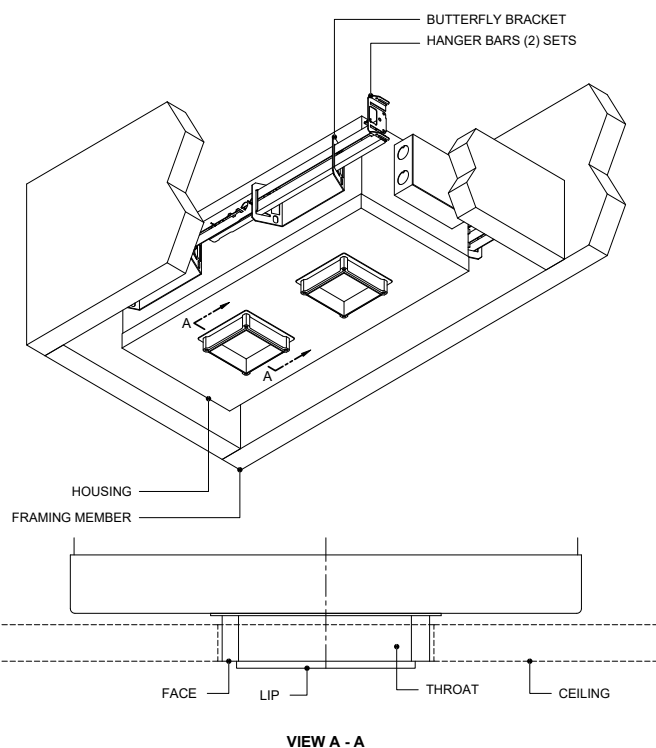
for RV3MD-SA-Z-AU

Cautions and Warnings

1. This product must be installed in accordance with the applicable installation code by a licensed electrician familiar with the construction and operation of the product and hazards involved.
2. Power must be OFF when connecting the fixture. "hot plugging" the light engine and driver will damage the LED source.
3. The light engine is low voltage and is factory wired to the driver DO NOT CONNECT LIGHT ENGINE TO MAINS AC POWER.
4. LEDs should be protected from dust and debris during installation and maintenance.
5. Polarity is important. Black must be connected to black and red connected to red.
6. Not designed for use as temporary lighting.

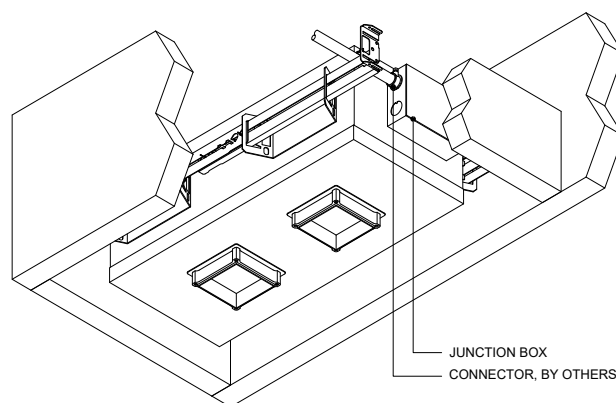
Step A

Mount housing to structure using included hanger bars. Mount housing so that face of throat behind lip is coplanar with the face of ceiling.



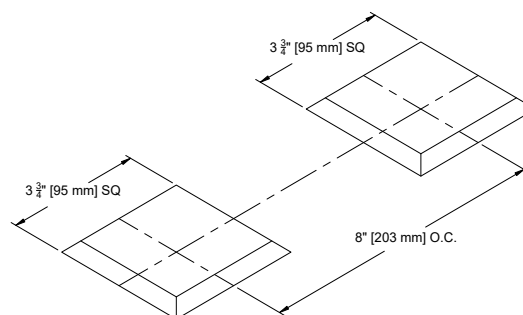
Step B

Make electrical connections in junction box.



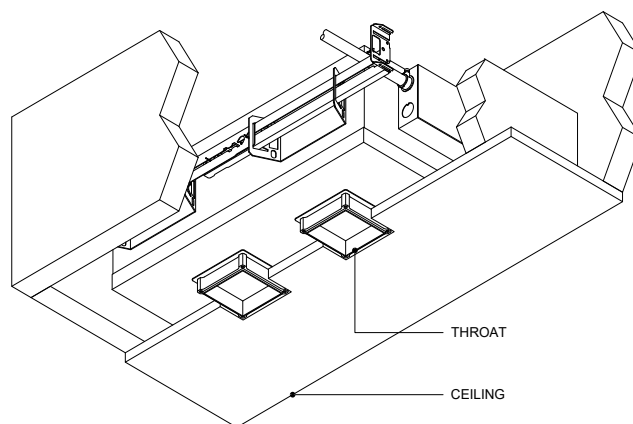
Step C

Cut (2) 3 - 3/4" [95 mm] sq. holes in ceiling, 8" O.C. as shown below.



Step D

Install ceiling ensuring the centers of the cut-outs align with centers of housing throats.



**** LED'S SHOULD BE PROTECTED FROM DUST AND DEBRIS DURING INSTALLATION AND MAINTENANCE**

[Click here to read full Care and Maintenance](#)

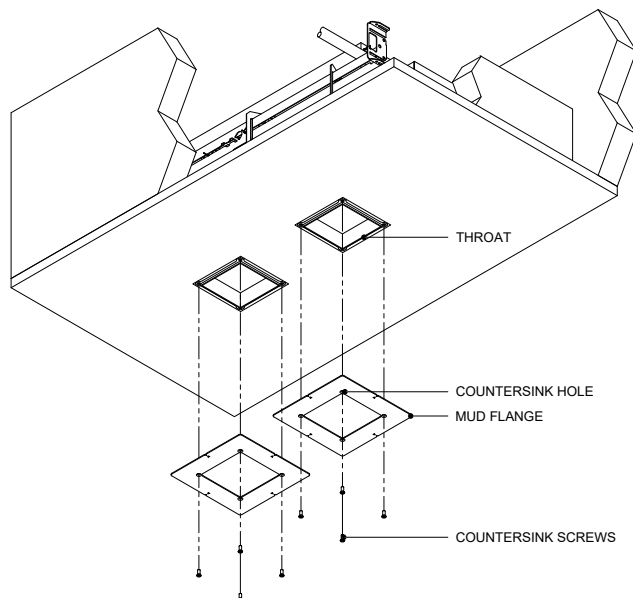
Installation Instructions

Rivet 3" Sq. Double - Flangeless Plaster Trim - Universal Housing

for RV3MD-SA-Z-AU

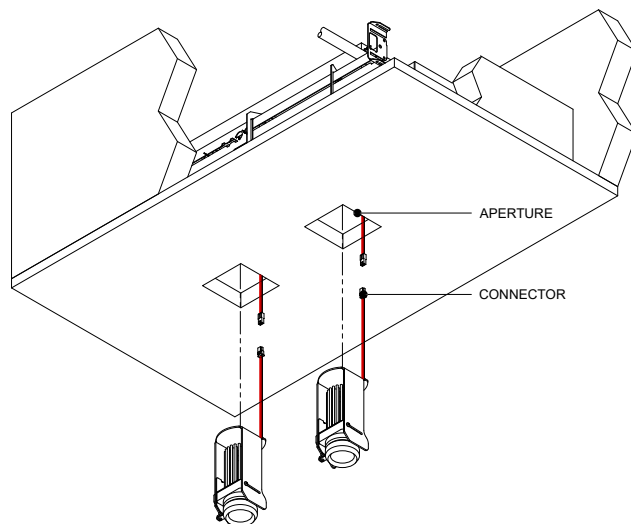
Step E

Install mud flanges with included countersink screws through countersink holes into throat.



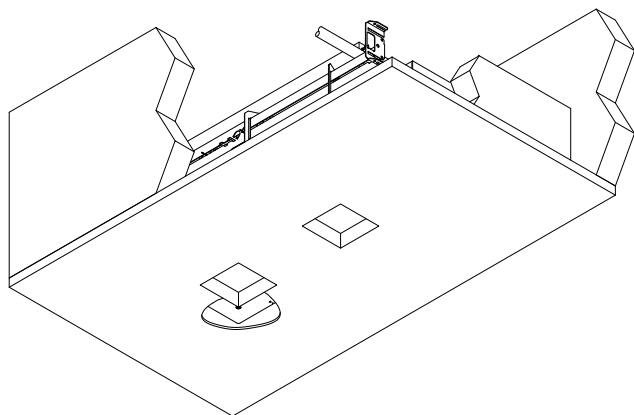
Step G

Attach connector, install lamp head through aperture and affix to top of inside of housing.



Step F

Finish ceiling, including mudding or plastering mud flange. (Take care not to get paint or joint compound inside opening of mud flange.)



Step H

To use aperture lens, reach inside of aperture and slide lens over aperture. Lens required for wet location operation.

