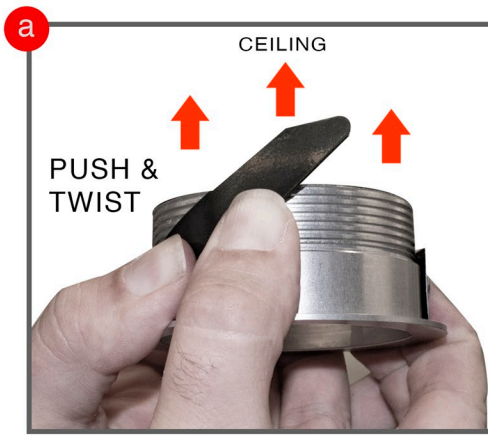


Cut 2-7/8" round opening in ceiling.



**Step A-** Flanged Trim goes thru cutout in ceiling. Make sure wing springs are compressed otherwise, trim won't be able to go thru ceiling

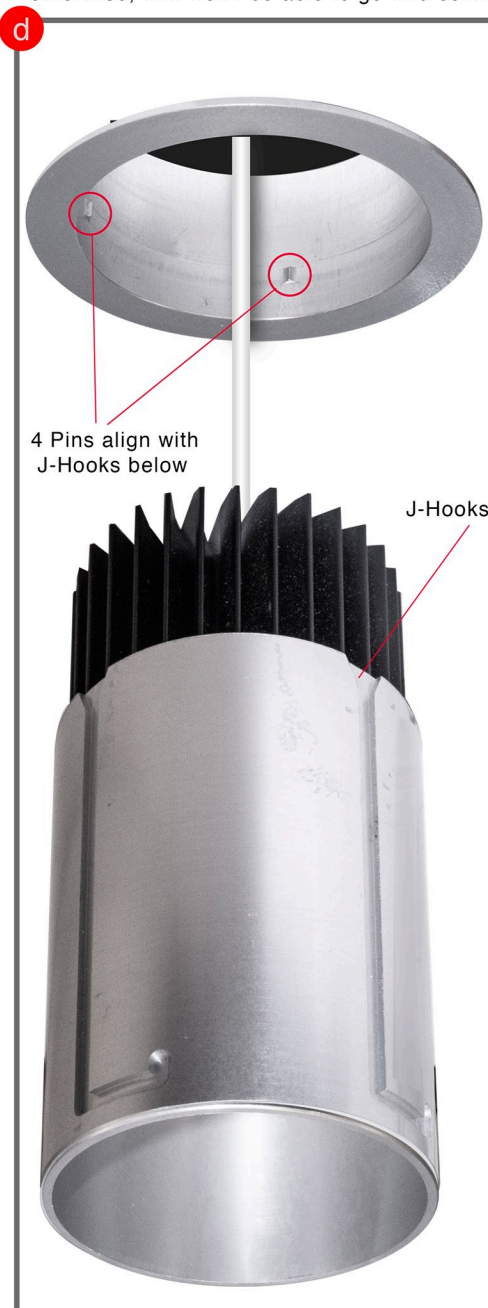


**Step B-** Flanged trim is installed with wing springs holding trim into ceiling  
 \* Ensure enough support is used to keep fixture in ceiling



**IMPORTANT**  
 J-hooks on housing need to lock into flanged trim. Failure to do so will cause trim to fall out of ceiling

**Step C-** Make sure all electrical connections are good before proceeding to step D.



**Step D-** Align Housing J hooks with 4 pins on flanged trim. Push housing up thru trim and turn counterclockwise when housing is beyond flush with flanged trim.



**Step E-** Finalize installation with housing flush with trim edge.

**Instruction Sheet for  
 Round Flanged  
 Install  
 4500-ZH  
 Zero Housing**

