

Installation Instructions

Rivet 3" Square Flangeless - Panel Mount

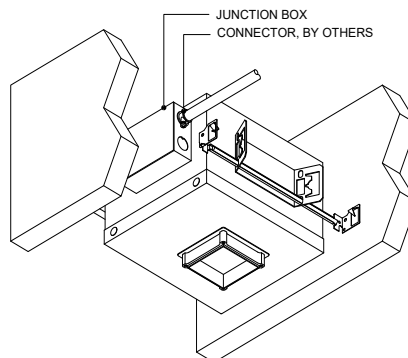
for RV3D-SA

Cautions and Warnings

1. This product must be installed in accordance with the applicable installation code by a licensed electrician familiar with the construction and operation of the product and hazards involved.
2. Power must be OFF when connecting the fixture. "hot plugging" the light engine and driver will damage the LED source.
3. The light engine is low voltage and is factory wired to the driver DO NOT CONNECT LIGHT ENGINE TO MAINS AC POWER.
4. LEDs should be protected from dust and debris during installation and maintenance.
5. Polarity is important. Black must be connected to black and red connected to red.

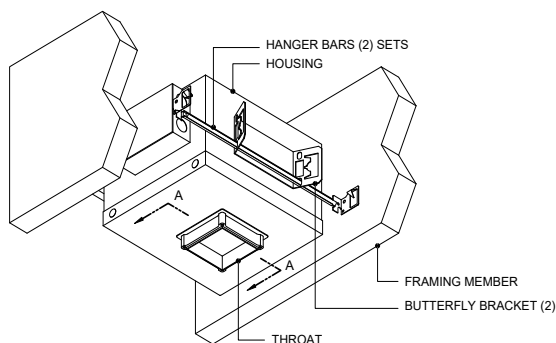
Step B

Make electrical connections in junction box.



Step A

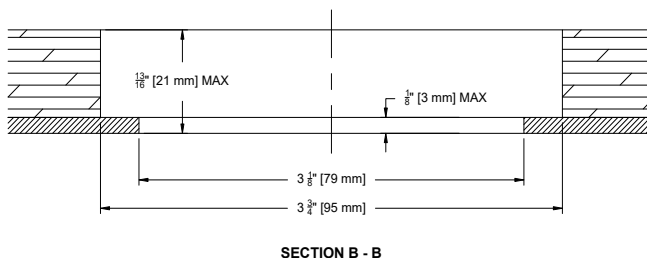
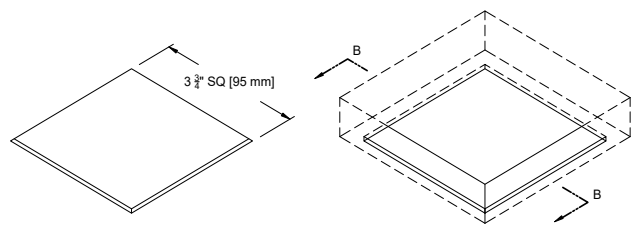
Mount housing to structure using included hanger bars. Mount housing so that the face of the lip of is coplanar with the face of ceiling.



VIEW A - A

Step C

1. Cut 3 - 1/8" [79 mm] sq. hole in panel.
2. Counterbore 3 - 3/4" [95 mm] sq. topside on base ceiling panel.



**** LED'S SHOULD BE PROTECTED FROM DUST AND DEBRIS DURING INSTALLATION AND MAINTENANCE**

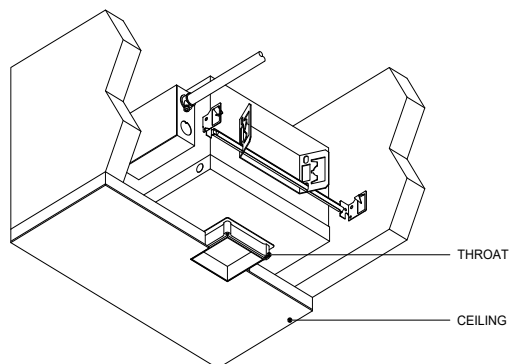
[Click here to read full Care and Maintenance](#)

Installation Instructions Rivet 3" Square Flangeless - Panel Mount

for RV3D-SA

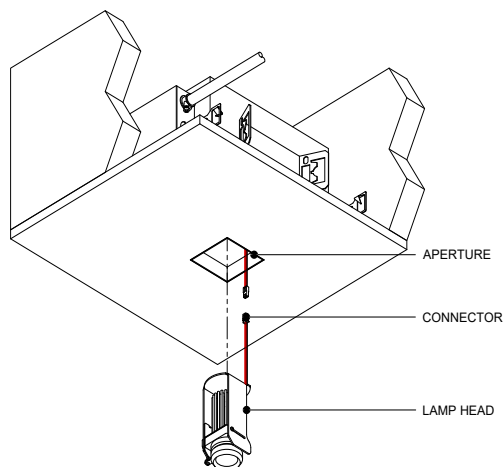
Step D

Install ceiling ensuring the center of the cut-out aligns with center of housing throat.



Step E

Attach connector, install lamp head through aperture and affix to top of inside of housing.



Step F

To use aperture lens, reach inside of aperture and slide lens over aperture. Lens required for wet location operation.

