

Installation Instructions

Rivet 3" Sq. Flangeless Plaster Trim - Universal Housing

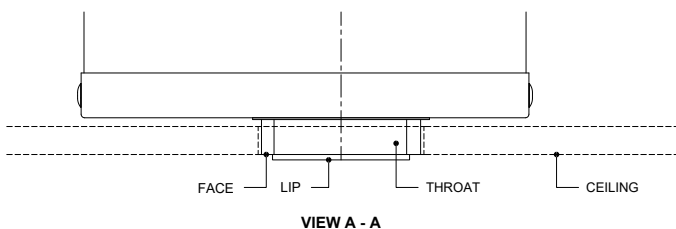
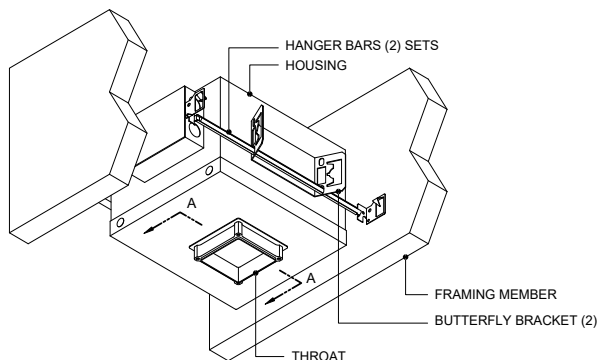
for RV3D-SA-Z-AU

Cautions and Warnings

1. This product must be installed in accordance with the applicable installation code by a licensed electrician familiar with the construction and operation of the product and hazards involved.
2. Power must be OFF when connecting the fixture. "hot plugging" devices will damage the LED source.
3. The light engine is low voltage and is factory wired to the driver **DO NOT CONNECT LIGHT ENGINE TO MAINS AC POWER.**
4. Polarity is important. Black must be connected to black and red connected to red.

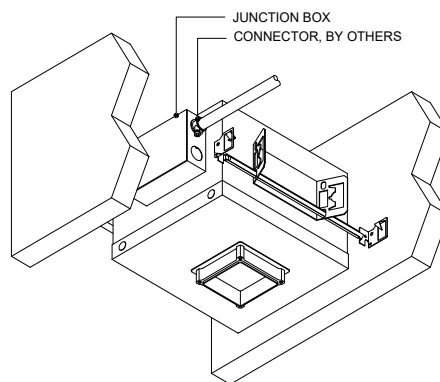
Step A

Mount housing to structure using included hanger bars. Mount housing so that face of throat behind lip is coplanar with the face of ceiling.



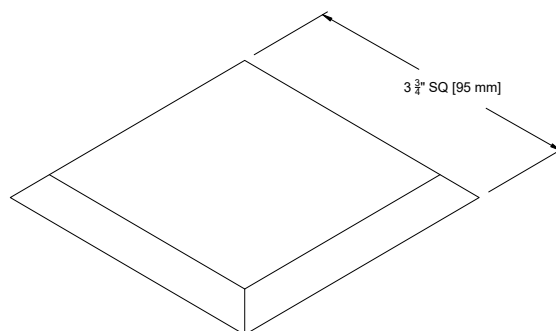
Step B

Make electrical connections in junction box.



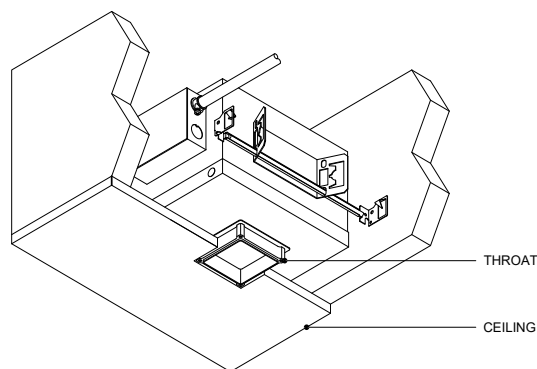
Step C

Cut 3 - 3/4" [95 mm] cut-out in ceiling.



Step D

Install ceiling ensuring the center of the cut-out aligns with center of housing throat.



**** LED'S SHOULD BE PROTECTED FROM DUST AND DEBRIS DURING INSTALLATION AND MAINTENANCE**

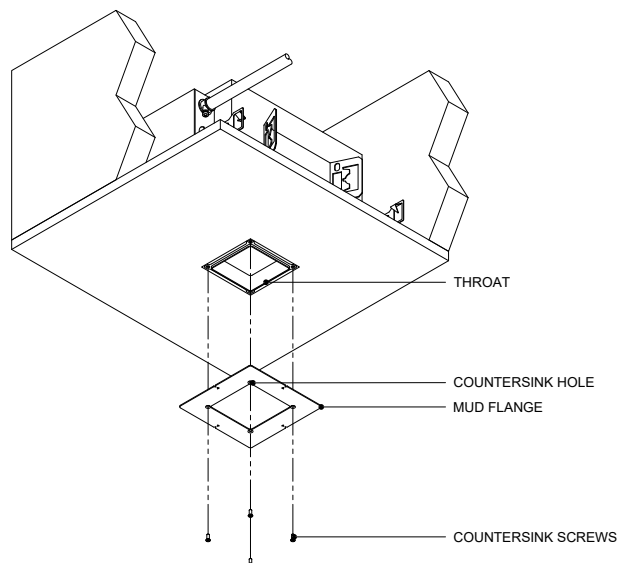
[Click here to read full Care and Maintenance](#)

Installation Instructions Rivet 3" Sq. Flangeless Plaster Trim - Universal Housing

for RV3D-SA-Z-AU

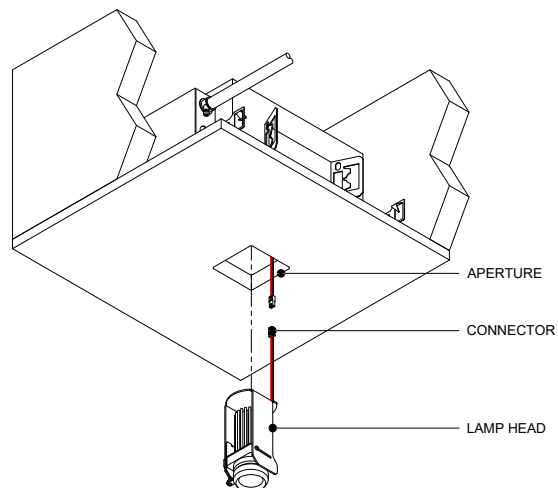
Step E

Install mud flange with included countersink screws through countersink holes into throat.



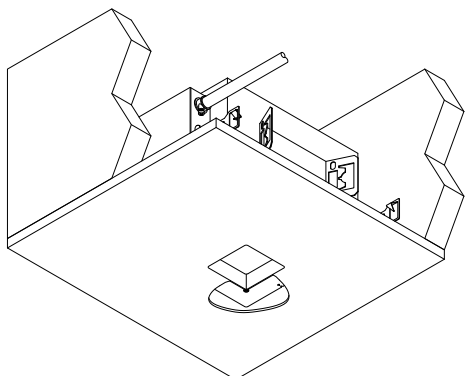
Step G

Attach connector, install lamp head through aperture and affix to top of inside of housing.



Step F

Finish ceiling, including mudding or plastering mud flange. (Take care not to get paint or joint compound inside opening of mud flange.)



Step H

To use aperture lens, reach inside of aperture and slide lens over aperture. Lens required for wet location operation.

